

Accessing Texas A&M University Qatar (TAMUQ) Networked Printers From Your Laptop/Tablet PC

In the Engineering Building, you can print from your laptop to any of the networked printers. There are printers in the computer labs, open areas, hallways, and library. The purpose of this handout is to explain how you can connect and print to the TAMUQ networked printers.

You can connect either by network cables or connect via wireless. **If you are on a network cable, skip to Step 2 below.**

Connecting by Wireless

1. Open a browser and connect to QFLink (<https://bluesocket.qatar.tamu.edu>) with your TAMUQ username and password (see Figure 1 below). After you are connected, continue with Step 2 below.

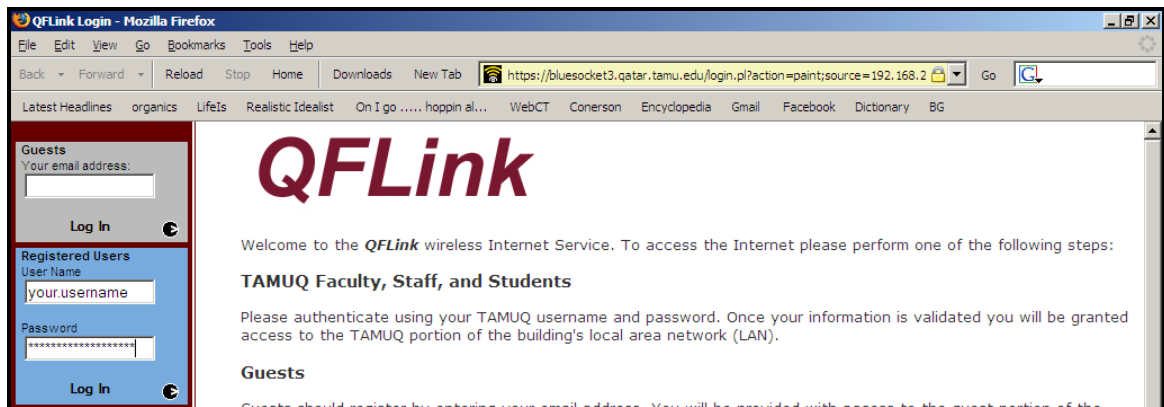


Figure 1

Connecting by Network Cable or by Wireless

2. Click on the **Start** button located in the bottom left-hand side of the screen (see Figure 2 below).



Figure 2

3. Scroll up to **Settings** and select **Printers and Faxes** (see Figure 3 below).

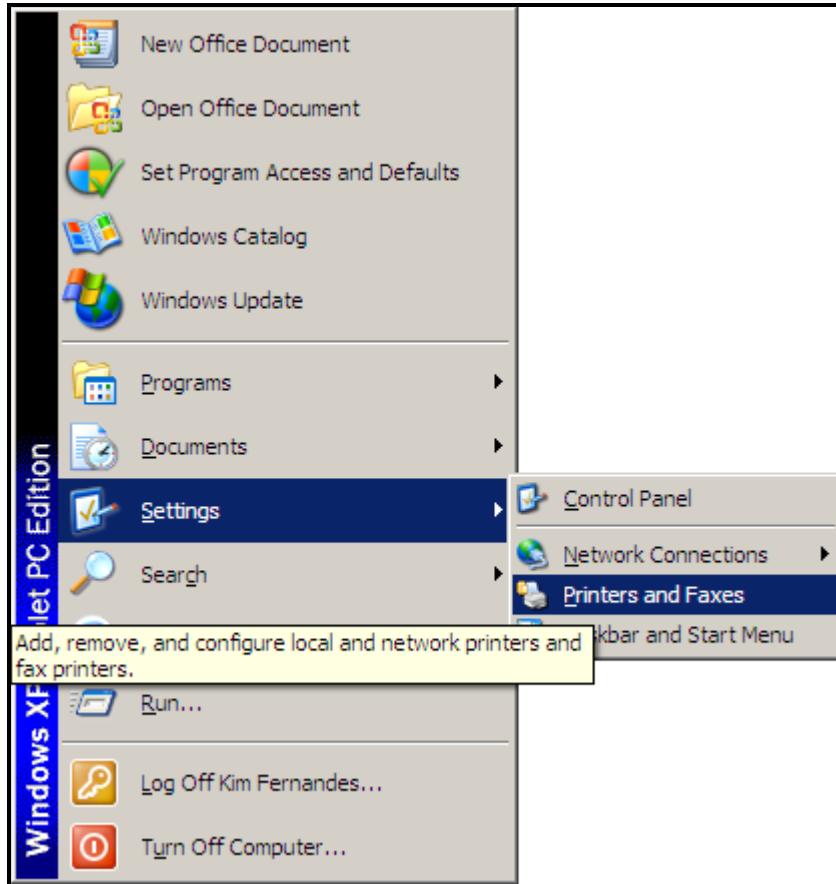


Figure 3

4. Click on **Add a Printer** (see Figure 4 below).

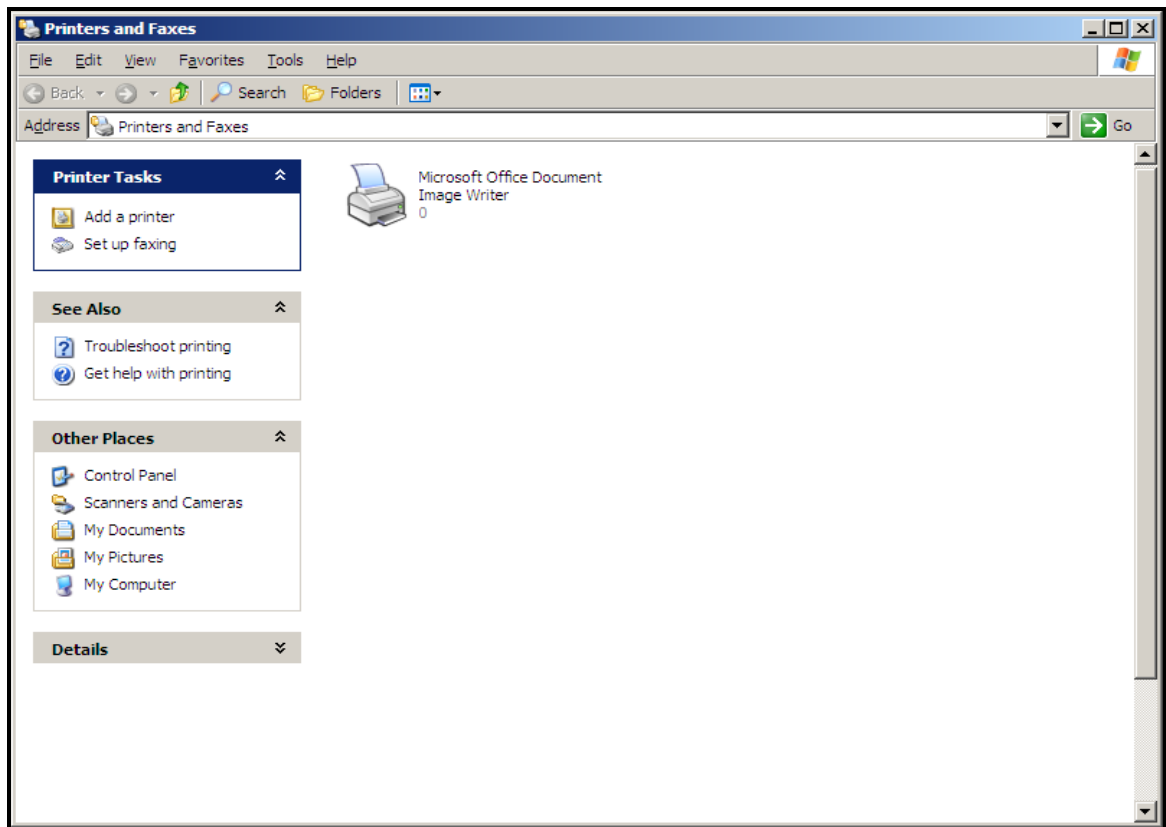


Figure 4

5. When the Add Printer Wizard screen appears, click on **Next** (see Figure 5 below).



Figure 5

6. The Local or Network Printer screen will appear. Check the ***A network printer, or a printer attached to another computer*** option and click on Next (see Figure 6 below).

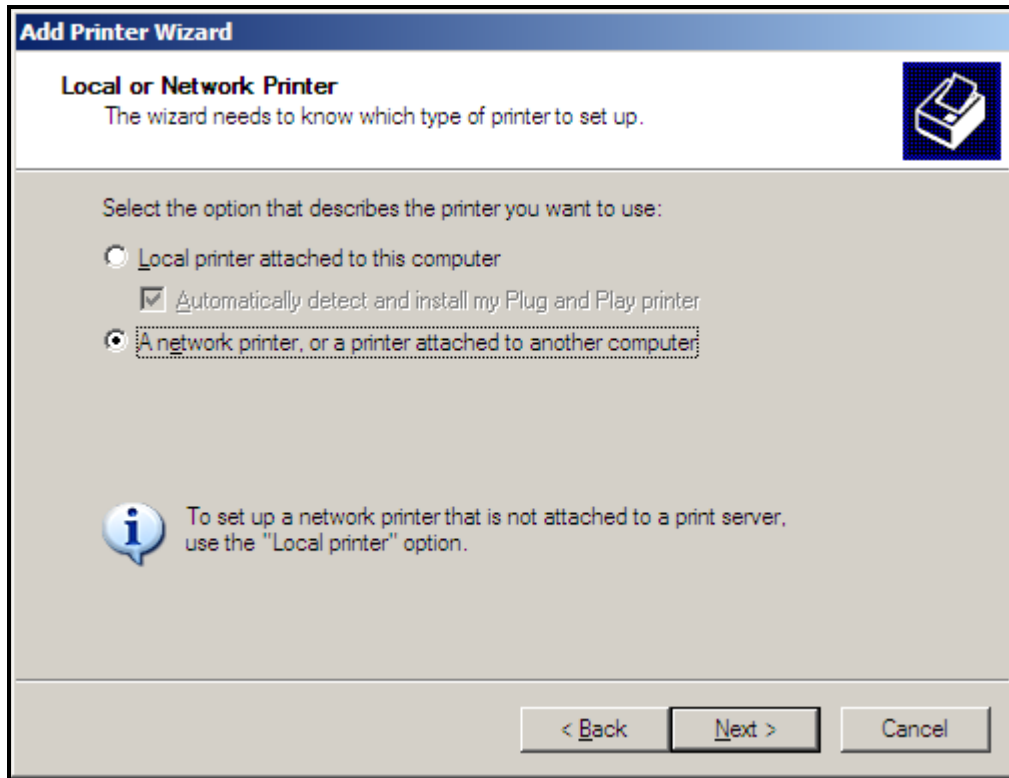


Figure 6

- The Specify a Printer screen will appear. Select the **Connect to this printer Option**. In the space provided entitled **Name:** type in the following: [\\tamuq-printers\](#) (see Figure 7 below). After you have typed in [\\tamuq-printers\](#), a list of printers will appear in a drop-down window. Select the printer and click on **Next**.

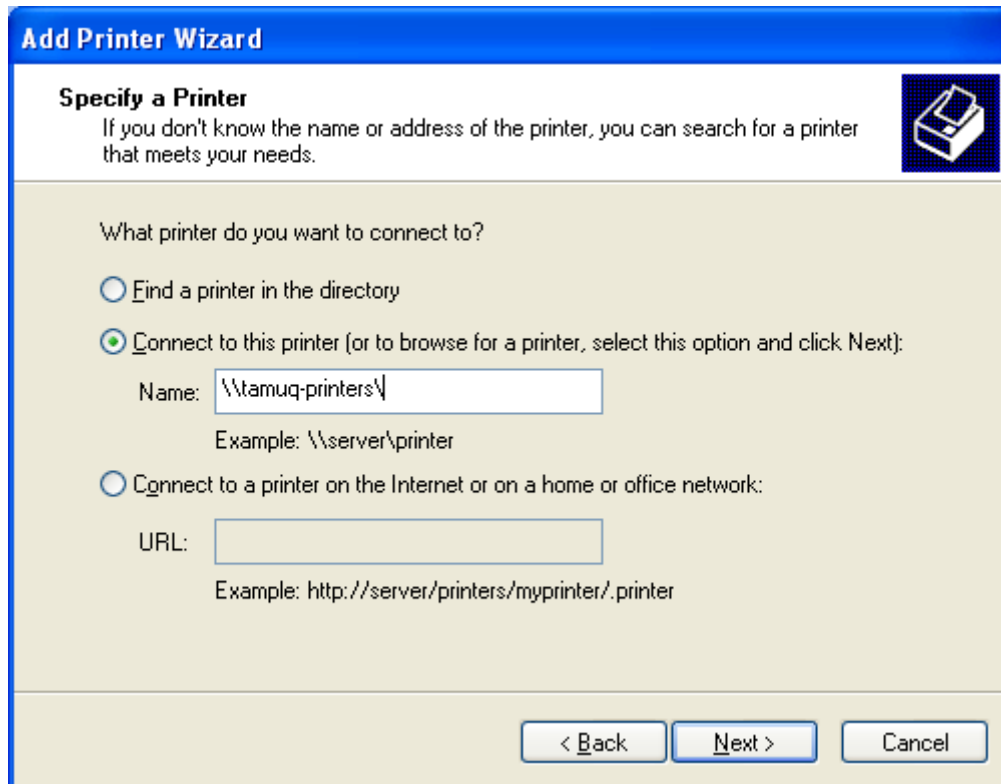


Figure 7

8. When the Connect to Printer screen appears, click on **Yes** (see Figure 8 below).

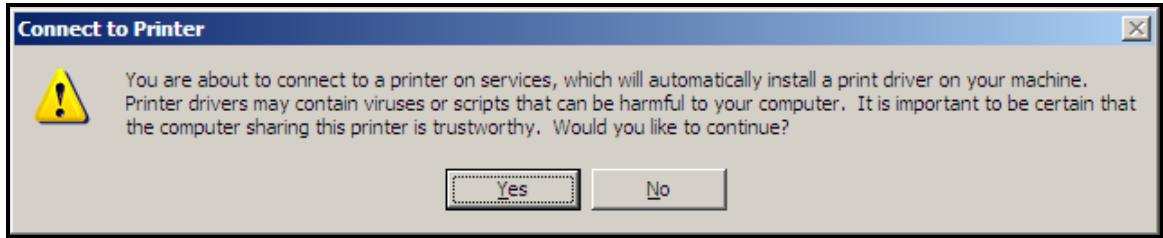


Figure 8

9. The Default Printer screen will appear. *Do you want to use this printer as the default printer?* Make your selection and click on **Next** (see Figure 9 below).

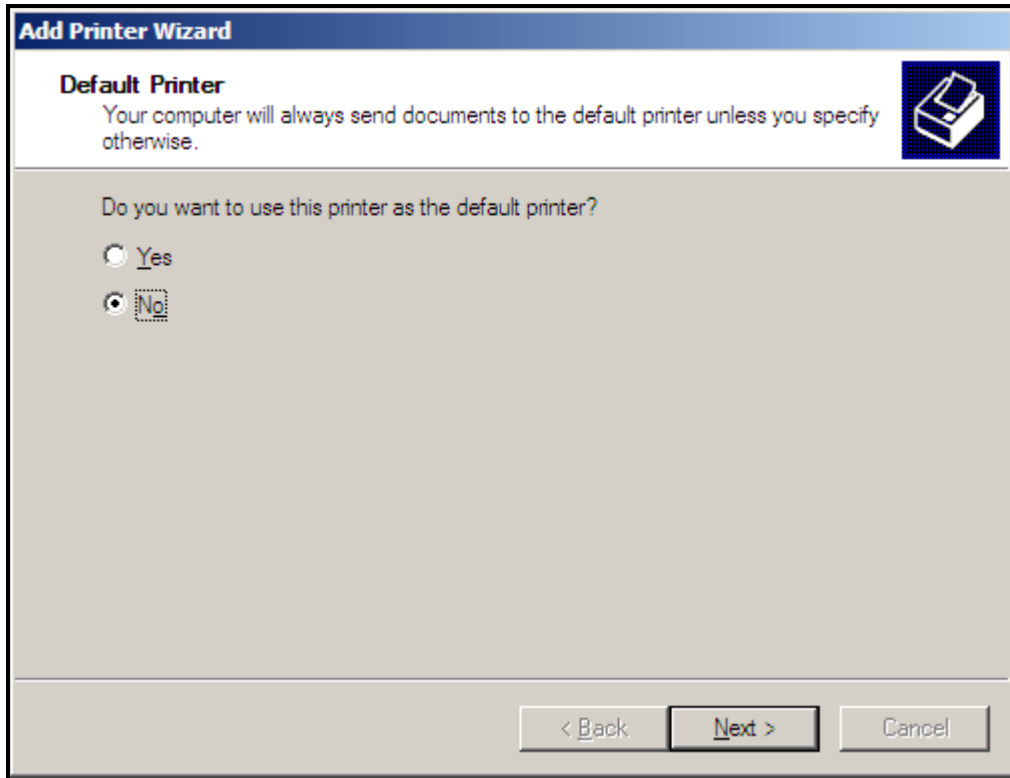


Figure 9

10. Completing the Add Printer Wizard screen will appear. Click on **Finish** to complete (see Figure 10 below). You should now be able to print from any application to the chosen printer.

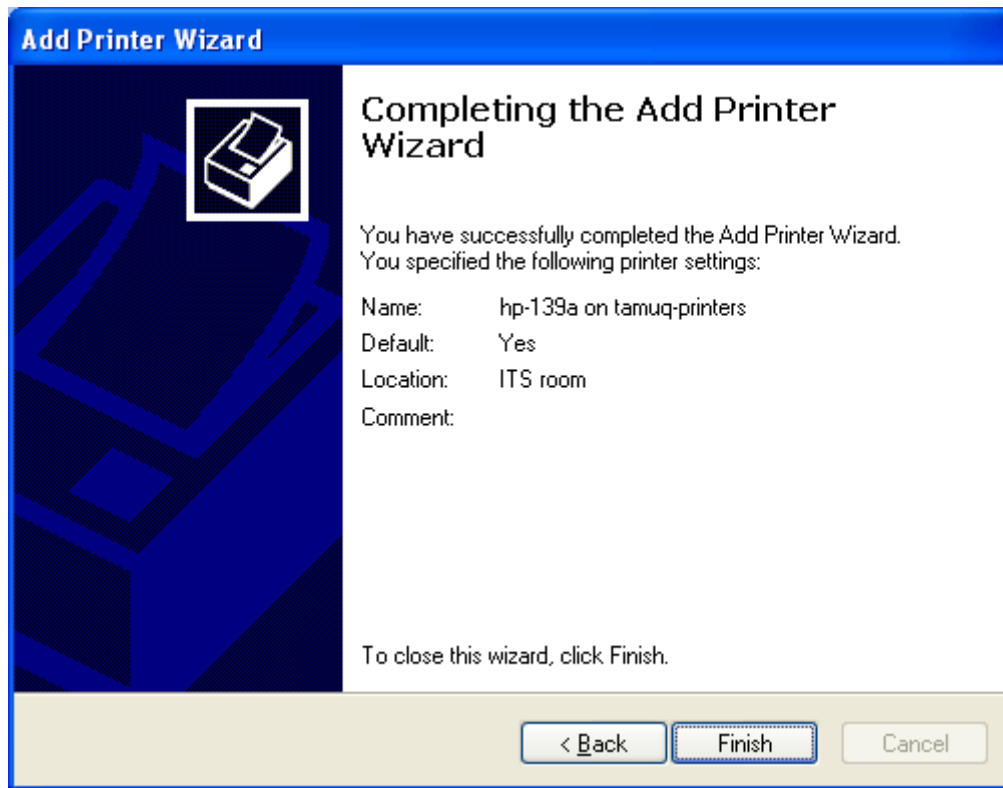


Figure 10

The above steps only need to be performed once for any specific printer.